



Preceptor Expansion Project helping us get to 25 x 30 and beyond !

Beat Steiner MD MPH

President STFM

**Senior Associate Dean of Medical Student Education
University of North Carolina School of Medicine**

Preceptor Expansion Project

- High Quality FM Teaching Practices:
- Needed for all students!
- Key pillar for pipeline (along with payment reform, admission, and curriculum)

The Summit

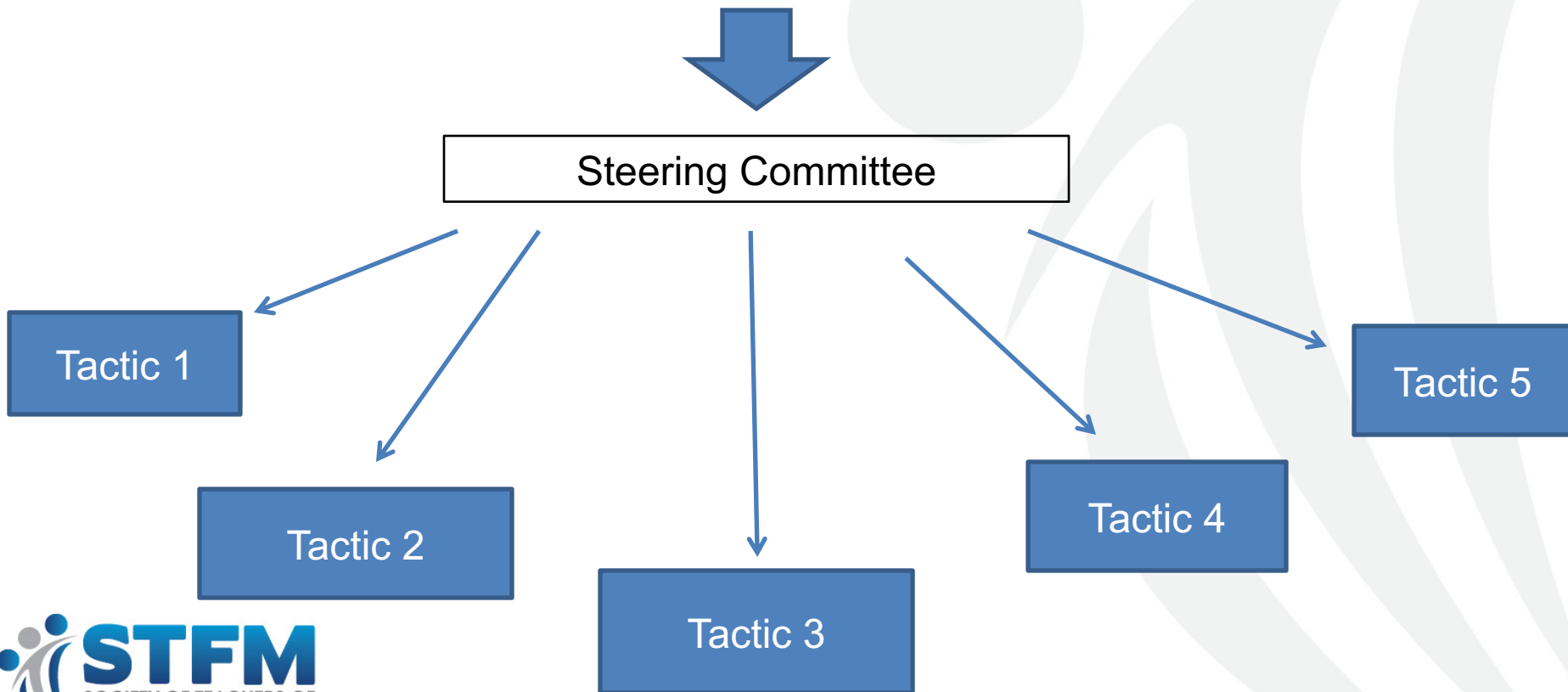


Tomorrow's Doctors, Tomorrow's Cures®



Aims:

- Decrease % of primary care clerkship directors who report difficulty finding clinical preceptor sites
- Increase % of students completing clerkships at high-functioning sites



Tactic 1: Key Idea:

Work with CMS to revise student documentation guidelines

****SUCCESS (mostly)****

- Next steps:
 - Work with others to support inclusion of PA/ NPs
 - Clarify physical presence and role of residents
- How you can help:
 - Help spread model institutional policies
 - Keep issue on radar for CMS

Tactic 2: Key Idea:

Interdisciplinary Education through Integrated Clerkships

****Early Progress****

- Next steps:
 - Building cases to give examples of incorporating multiple learners in one environment
 - Disseminate cases
- How you can help:
 - No specific ask at this time

Tactic 3: Key Ideas:

Development of standardized onboarding for students and preceptors

Integrate students in authentic and useful ways

****Significant Progress****

Materials to be part of Tactic 4 pilot

Tactic 4: Key Idea:

Develop educational collaboratives
across departments and institutions to increase administrative
efficiencies

****Significant Progress****

- Next steps:
 - ABFM Foundation to fund 15 Dept of FM to pilot materials from tactic 3
 - Applications due 2/22/19
- How you can help:
 - Apply if you have not already done so!

Tactic 5: Key Idea:

Teaching Incentives & Creating a Culture of Teaching

****Significant Progress****

- Next steps:
 - Incentives
 - Expand ABFM PI pilot
 - Disseminate health system incentive models
 - Better define teaching practices
 - Study impact of teaching
- How you can help:
 - Connect with your system leaders
 - Encourage scholarly work



Michelle A. Roett, MD, MPH, FAAFP, CPE

Chair, ADFM Education Transformation Committee
Professor and Chair, Department of Family Medicine
Director, DC AHEC
Georgetown University Medical Center

ADFM Education Transformation Committee

- Two specific priorities:
 - Increase the number of US medical school graduates selecting family medicine as a career.
 - Collaborate with AFMRD and other organizations to re-design GME to meet the needs of the healthcare system of the future.

Student Choice Best Practice Guide

- FMA Health Workforce Tactic Team led by Dr. Christina Kelly
- For Strategic Planning to increase student choice of Family Medicine
- Partnership with AAFP Student Choice Learning and Action Network (SCLAN)
- 2016 Listserv inquiry
- 2016, 2017 Breakfast Topic tables

2016 ADFM Survey: Would you be interested in shared best practices for departmental strategic planning to increase student choice of Family Medicine?

Response	N (%)
Yes	95 (86%)
No	15 (14%)

Engaging Medical Students

- **What do faculty and Department Chairs think about connecting with students?**

2016 Survey Results

1. FM Clerkship
2. FM M1/M2 involvement in curriculum
3. FM Leadership in health system/med school
4. FM Leadership in the Dean's office
5. FMIGs, FMIG Faculty Advisor
6. FM Mentorship

Engaging Medical Students

- **What do students tell us are the most meaningful interactions?**
 1. Early clinical experiences, scope, setting, quality of practice, exposure to FM careers
 2. Early FM mentorship opportunities
 3. Early community service experiences with FM
 4. AAFP Membership, AAFP National Conference, FMIG
 5. Pipeline: high school, college, post-bacc, pre-admissions

2018 ADFM Chair Survey

Four Pillars	% No or little engagement	% Moderately engaged	% Highly engaged but not achieving high impact	% Highly engaged and achieving high impact
Pipeline	4.8%	32.7%	30.8%	31.7%
Process of Medical Education	2.9%	22.1%	34.6%	40.4%
Practice Transformation	4.9%	28.2%	38.8%	28.2%
Payment Reform	40.4%	31.7%	20.2%	7.7%

2018 ADFM Survey

- ***Pipeline programs***
 - STEM programs
 - Medical School Admissions & culture
 - FMIG
 - GME expansion
 - New residency programs

Admissions Committees

How many of you have a personal role or any dept faculty represented on the admissions committee at your institution?

2016 ADFM Survey: Does your admissions committee have a specific charge to seek out applicants interested in primary care careers?

Response	N (%)
Yes	33 (30%)
No	76 (70%)

Changing Admissions Criteria

- **Purposeful changes to admissions criteria:**
 - Focusing on emotional intelligence
 - Recruiting students from communities where they will return to work
 - Community partnerships
 - Rural recruitment
 - Alignment with school's social mission
 - Holistic admissions

TABLE DISCUSSIONS

- Facilitators:
 - Education Transformation Committee members, ADFM Fellows, residents, students, STFM Preceptorship Initiative

ADMISSIONS COMMITTEES

- Question:

If you had control of the admissions committee at your institution, what policies would you put in place to increase student choice of family medicine?

10 minutes

PRECEPTORSHIP

- Question:

**How do departments of family med
engage health system leadership on
preceptorship?**

10 minutes